

PA

Mains: L'Acoustics ARCS II x4 (2x per side)
Center Fill: L'Acoustics X12 Down Fill Speaker x1
Subs: L'Acoustics SB28 x2
(Under the Center of Stage, "End Fire" Configuration)
FOH Delay System: L'Acoustics 108P x2
Monitors: L'Acoustics 112P x8
FOH Console: Yamaha CL3
Stagebox: Rio3224-D (32in/16outs/4 AES/EBU outs)
MON Console: Yamaha M7CL-32
(MON Engineer on a Show by Show Basis; Pending Ticket Sales)
32-CH Analog Split

Mics:

::Shure

- SM57 x4
- SM58 x8
- SM58s x1
- SM81 x4
- SM27 x2
- Beta 52A x3
- Beta 91A x1
- Beta 57A x4
- Beta 58A x

::Sennheiser

- e609 x2
- e604 x5
- MD 421-II x2

::Telefunken

- M80 x2

Mics (Cont'd)

::sE Electronics

- V7 x2

::Audix

- D6 x1
- i5 x1
- D2 x2
- D4 x1
- ADX51 x3

::Radial ProDI Boxes

- J48 x2
- JDI Stereo x1
- Pro D2 Stereo x1
- Pro AV2 Stereo x2
- ProDI x4

RF/Wireless

::Shure ULXD4D

(G50: 470-534 MHz)

- 2x: ULXD2 Handhelds w/ SM58 Capsules

::Sennheiser G4 EW IEMs

(A1: 470-516 MHz)

- 3x: SR IEM G4 (Units)
- 3x: EK IEM G4 (Packs)
- 1x: AC 41 Combiner

(This is a rental fee and is at artist's cost; Inquiry for more info)

DJ Gear

2 Technics 1200s
2 Pioneer CDJs 2000 NXS2
1 Pioneer DJM-900 NXS2

Lights

Console: GrandMA2 PC Version w/ Fader Command Wing

Instruments:

Proton 3K | 900 Watt LED Strobe x 2
Elation CUEPIX Blinder WW4 x 2
Elation Fuze Profile CW x2
Elation Fuze Wash Z350 x2
Chauvet Rogue R1 Beam x 4
Chauvet Rogue R1 Wash x 4
Chauvet Ovation E-190WW-26 Degree x 6
Chauvet Colorado TriTour x 14
Martin Rush MH5 Profile x 6
MasterFX Mystic Haze Machine

Stage

14' - 16' flexible depth x 40' width (34" height)

Steel Deck

- 4x6 - 2x
- 3x8 (DJ Table) - 1x

Projector

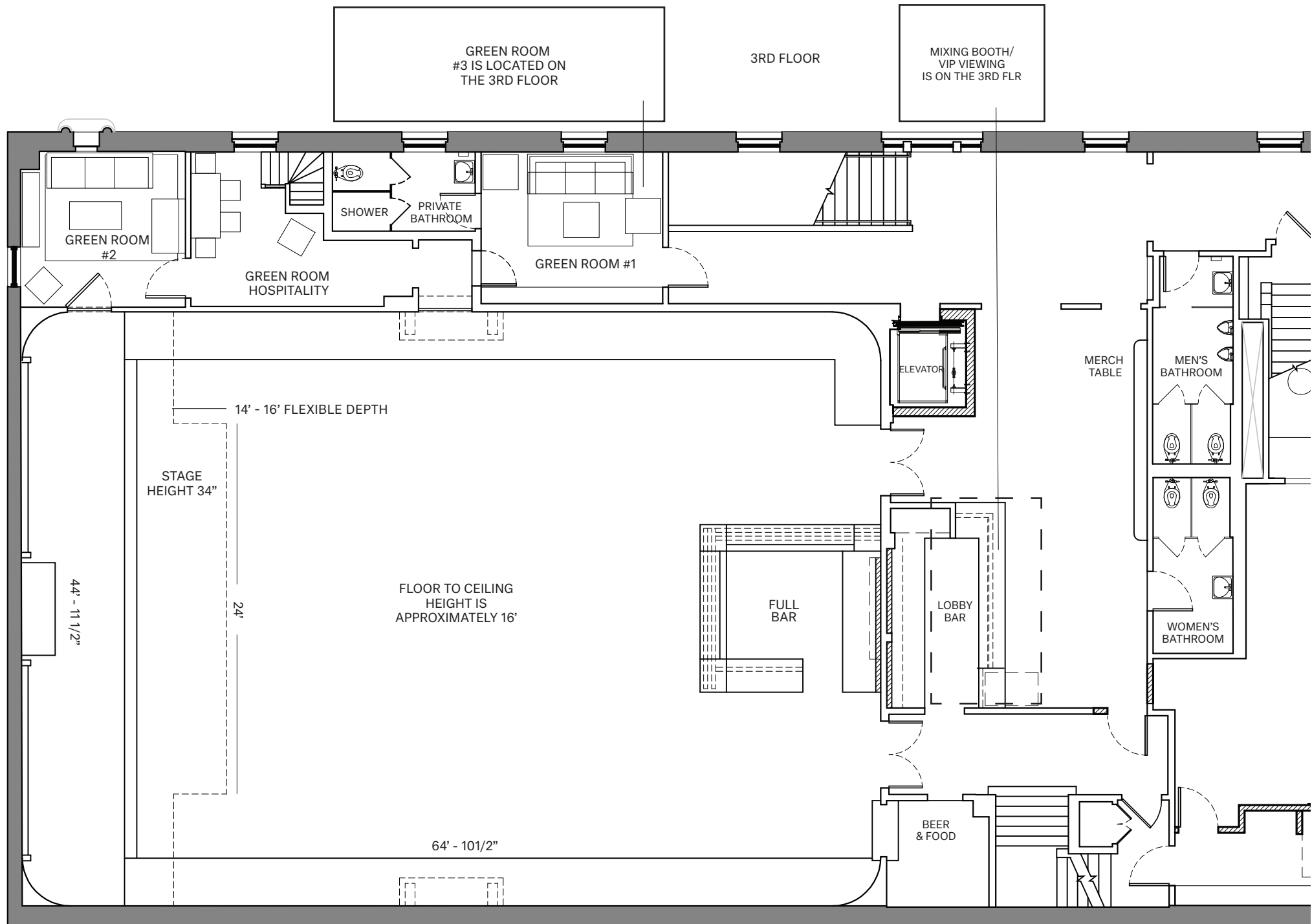
Barco G100-W16: 16,000 lumen projector
(1920x1200 WUXGA 16:10) HDMI input
- 3x HDMI Drops: (1x) FOH, (2x) Stage
(Stage drops are as follows, 1x HDMI, 1x SDI [Maxed at 1080p])

Screen:

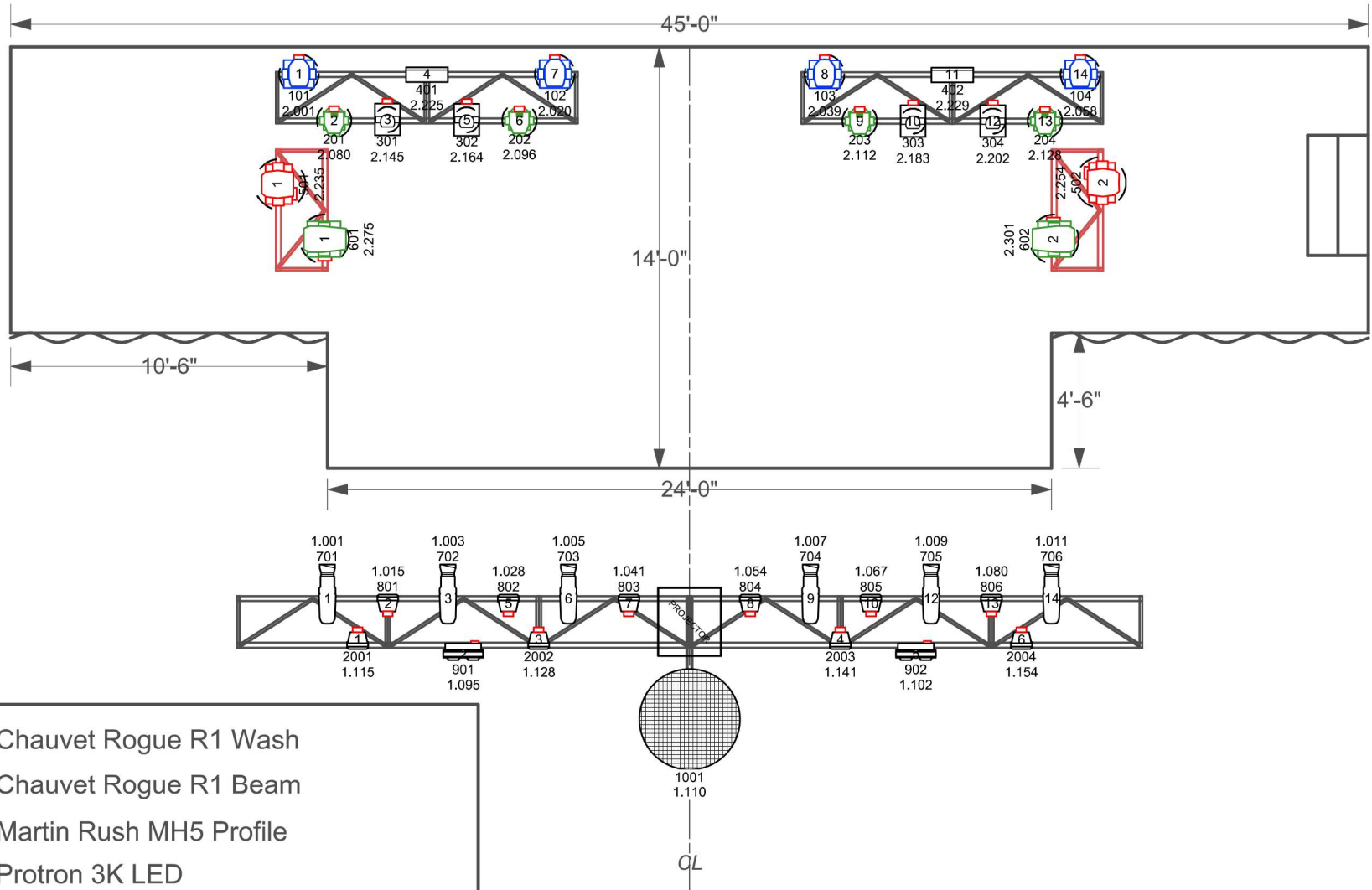
Motorized Projector Screen: 147.5" x 236"
(278" Diagonal 16:10)

Elevator Dimensions

36"w x 80"h x 62"d



REVISED: 07/07/24



-  Chauvet Rogue R1 Wash
-  Chauvet Rogue R1 Beam
-  Martin Rush MH5 Profile
-  Protron 3K LED
-  Elation Fuze Wash Z350
-  Elation Fuze Profile
-  Elation Leko 26 Deg
-  Chauvet COLORado 1 Tri Tour
-  Cuepix Blinder WW4

Lodge Room Light Plot	
Scale: 3/16" = 1'	Date: Feb 9, 2023
Page: 1 of 1	Version: 6
Design & Drafted by: Lusha Huang	

REVISED: 07/07/24