



## TECH SPECIFICATIONS

---

### PA

Console: Yamaha CL3  
Mains: L'Acoustics ARC II x 4  
Center Fill: L'Acoustics X12 Down Fill speaker x 1  
Subs: L'Acoustics SB28 x 2  
Monitors: L'Acoustics 112P x 6

FOH Delay System: L'Acoustics 108P x 2

#### Mics:

Shure SM57LC x 4  
Shure SM58-LC x 8  
Shure BETA52A x 3  
Shure BETA57a x 4  
Shure SM81-LC x 4  
Shure SM27SC x 2  
Sennheiser E609 x 2  
Sennheiser e604 x 4  
Shure ULXD2/SM58 Wireless  
Handheld Transmitter w/ SM58 Mic x 2  
Radial ProDI Boxes

Other: Pioneer CDJ-2000 NXS2 x 2  
Numark NTX1000 x 2  
Antari HZ-400 Haze Machine

### Lights

Console: ACT Cybernet All in One PC/ MA  
on PC fader wing

#### Instruments:

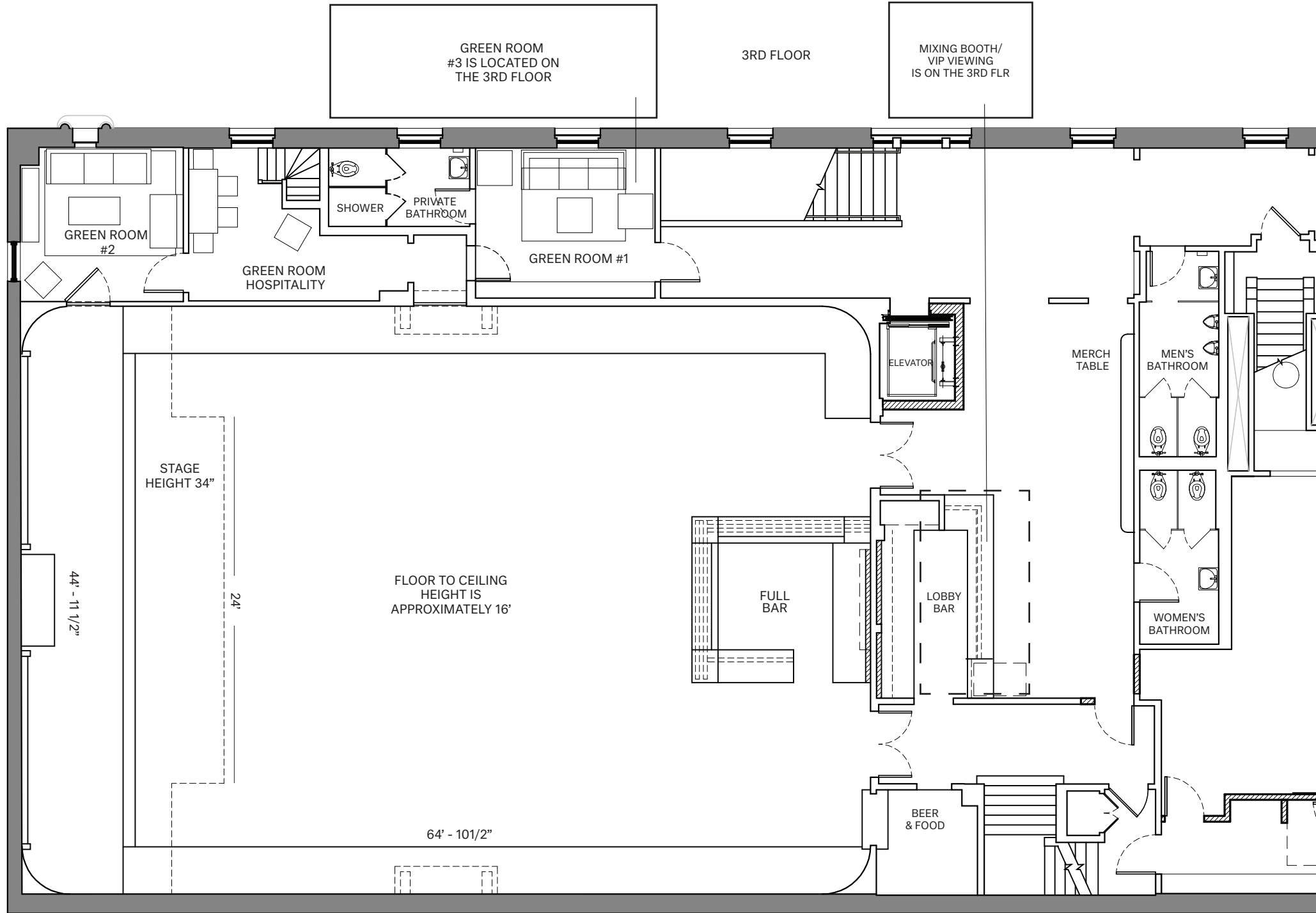
Proton 3K | 900 Watt LED Strobe x 2  
Chauvet COLORADO 4IP Blinder x 2  
Chauvet Rogue 1 Beam x 5  
Chauvet Rogue R1 Wash x 5  
Chauvet Ovation ED-190WW - 26 Degree

#### LED Leko x6

Chauvet Colorado TriTour x 14  
Martin Rush MH5 Profile x 6

### Stage

14' - 16' flexible depth x 40' width (34" height)



GREEN ROOM  
#3 IS LOCATED ON  
THE 3RD FLOOR

3RD FLOOR

MIXING BOOTH/  
VIP VIEWING  
IS ON THE 3RD FLR

GREEN ROOM  
#2

GREEN ROOM  
HOSPITALITY

SHOWER

PRIVATE  
BATHROOM

GREEN ROOM #1

ELEVATOR

MERC  
TABLE

MEN'S  
BATHROOM

STAGE  
HEIGHT 34"

44' - 11 1/2"

24'

FLOOR TO CEILING  
HEIGHT IS  
APPROXIMATELY 16'

FULL  
BAR

LOBBY  
BAR

WOMEN'S  
BATHROOM

64' - 10 1/2"

BEER  
& FOOD

**LODGE.  
ROOM.**

**CONTACT:**

[info@lodgeroomhlp.com](mailto:info@lodgeroomhlp.com)

104 N. Avenue 56  
Highland Park,  
Los Angeles, California

[Lodgeroomhlp.com](http://Lodgeroomhlp.com)  
[@lodgeroom](#)